



Our Father's World

RENEWAL

Annual Report 2025/2026





ORGANISATIONAL INFORMATION

Our Father's World Limited (OFW) is a company limited by guarantee and a charity registered under the Charities Act 1994, as well as an associate member of the National Council of Churches Singapore.

UNIQUE ENTITY NUMBER
202452391R

OFFICIAL WEBSITE
www.ofw.sg

BANKER
United Overseas Bank Limited

REGISTERED ADDRESS
2 Kallang Ave #04-09
CT Hub @ Kallang
Singapore 339407

EMAIL ADDRESS
hello@ofw.sg

AUDITOR
Shepherd Assurance

TABLE OF CONTENTS

Organisational Information	2
Our Year in Photos	4
Message from the Chairman & Executive Director	6
About Us	8
Our Board of Directors & Advisory Council	9
A YEAR OF RENEWAL: OUR IMPACT	10
Equipping Churches for Creation Care Integration	12
Setting the Stage for Regional Impact	16
Engaging Believers to Care for Creation	18
Becoming a Charity	19
Developing the Next Generation	19
Sustainability Report	20
What's Next	22
Support Us	24
Thank You to Our Partners	25
APPENDIX	26
Organisational Chart	28
Our Board Governance	29
Our Charity Policy	30
Financial Overview	31



April 2025 | Fundraising Nature Photography Masterclass with award-winning photographer Jayaprakash Bojan



July 2025 | Speaking on creation care at a Missions Conference by Faith Methodist Church



March 2025 | Contemplative Beach Cleanup with Hingwa Methodist Church Children's Ministry



August 2025 | Tree planting with the Methodist Church in Singapore for their 140th anniversary



April 2025 | Building bridges with counterparts of other faiths at the Caritas Earth Day Interfaith Dialogue

OUR YEAR IN PHOTOS



August 2025 | Entered into partnership with World Outreach Singapore for a space to gather volunteers and base operations



September 2025 | Creation Care Conference 2025 saw over 400 participants from 10 countries, including our Guest-of-Honour Mr Desmond Lee, Minister for Education



September 2025 | Received the Creation Care Award at Salt&Light's Inspiration Awards 2025



November 2025 | Vision casting and planning for AY2026 at our yearly planning retreat



December 2025 | Embarked on our first public fundraising campaign as a registered charity



November 2025 | Launched the Church Garden Network with a sharing by permaculture specialist Nova Nelson



February 2026 | Appreciating and building relationships with our volunteers at our annual Volunteers' Lunch



March 2026 | The first RENEW Gathering with creation care advocates under our RENEW discipleship journey for churches



CHAIRPERSON'S WELCOME

Dear Friends of OFW,

I first met the young team when I was invited to speak at their inaugural Creation Care Conference. I agreed because I believe creation care is integral to God's mission – but also because of their exceptional passion to serve the Lord through this work. Witnessing their growth, I felt called to walk alongside them – an experience I am sure many of you relate to.

They have carried that zeal into a new season: renewing themselves as Our Father's World, a registered charity, widening their horizons to serve Singapore and the broader Southeast Asia by walking with the Church in its care for creation.

This work is critical. Our region bears a disproportionate share of the triple threat of climate change, pollution, and biodiversity loss. Environmental devastation threatens the lives of our neighbours – even Singapore is not spared from rising temperatures and rising seas. Hundreds of millions are set to become climate refugees, with consequences that could destabilise nations and make it harder for the Church to operate across the region.

Rather than feel overwhelmed, we have chosen to see this as an opportunity. God's intended primary agent of creation care is His Church, made up of disciples of Jesus like you and I. That is why we launched RENEW, Asia's first

creation care discipleship journey for churches. We believe it lays the foundation for churches to become models of bold stewardship in renewing God's creation.

The Church, His Body, must seize this moment to renew our relationship with His World for right stewardship. This is why, at OFW, we continue striving to journey with churches and communities to be a signpost to the renewed cosmos, where God will dwell with His creatures.

To God be the glory!

Faithfully,

Leow Wen Pin
Chairperson



MESSAGE FROM EXECUTIVE DIRECTOR

This has been a season of renewal – for OFW, and for me personally. At the end of 2024, I left my career to step into full-time ministry as Executive Director. It was a costly decision, but one I am entirely certain was God's call. It has not been easy. But His goodness has been richly evident in what we have seen this past year.

The Creation Care Conference 2025 (CCC25) offered a glimpse of the regional impact we believe the Church in Singapore can have. Hundreds of believers from 10 countries and 130 churches gathered to renew their collective desire for God's renewal of creation. Denominational and national leaders alike spoke to the need for churches to care for creation. Moreover, 20 denominations, mission agencies, seminaries and humanitarian organisations in Singapore pledged in a statement of unity recognising creation care integral to God's mission.

At this watershed moment, we launched RENEW – our flagship creation care discipleship journey for churches. It consolidates our new and existing church engagement and equipping programmes under a single banner, bringing clarity and structure to the difficult task of infusing creation care into individual and church life. The five early adopter churches have since been joined by 11 more, tripling the number of churches walking together. We are now focused on journeying with them to become churches aware of, and engaged in, caring for creation.

Looking to 2030, our vision remains clear: a self-sustaining ecosystem enabling the Church in Singapore to care for creation. It should no longer be a fringe issue, but integral to every disciple's life, just as proclamation, discipleship, and loving service are. We aim to do this by empowering advocates that lead creation care movements. By equipping churches to embed creation care into disciple-making. By building communities of practice actively catalysing creation care in church and society.

Of course, this will take more than just us. It will take champions, churches and communities – renewing their commitment to Him and His creation.

Thank you for journeying with us in this new season. Through your prayers, gifts, and steps of faith, you have made a difference to our Father's world. By His grace, we continue to strive towards a Church living out God's heart for creation – together.

In His love,

Dennis Tan
Co-Founder & Executive Director



ABOUT US

Founded in 2020, Our Father's World is a creation care mission organisation based in Singapore. Our mission is to inspire and equip the Church to love and care for God's creation. To date, we are the largest and most active creation care organisation locally.

We develop projects and platform stories where creation care is integral to the mission of God. We provide resources and consultancy to establish, develop and sustain a culture of creation care within churches. We build an ecosystem both locally and internationally to empower creation care changemakers for the Church.

OUR VISION

The Church living out God's heart for creation.

OUR MISSION

To inspire and equip the Church to love and care for God's creation.

CORE VALUES

- Born Out of Love
- Rooted in Scripture
- Engaging Faithfully
- Embracing Community

OUR BOARD OF DIRECTORS



CHAIRPERSON
Leow Wen Pin
Theological Educator



TREASURER
Lester Tan
Finance Professional



SECRETARY
Liaw Ann Shin
Sustainability Professional



EXECUTIVE DIRECTOR
Dennis Tan
Co-Founder and Executive Director



MEMBER
Isabel Loh
Sustainability Professional



MEMBER
Alicia Lim
Nature Educator



MEMBER
Jarel Tang
Management Consultant, Audit In-charge

OUR ADVISORY COUNCIL

Local and international Christian leaders who support our work through expert advice, collaborations, and networking:



Rev Dr Gregory Goh
Former President, Chinese Annual Conference of the Methodist Church in Singapore



Rev Lam Kuo Yung
Synod Vice-Moderator, the Presbyterian Church in Singapore



Jasmine Kwong
Creation Care Catalyst, Lausanne Movement



A/P Adrian Loo
Deputy Director, NUS Centre for Nature-based Climate Solutions



Revd Ian Chew
Vicar, Church of the Ascension of the Anglican Diocese in Singapore



Rev Dr Andrew Peh
Lecturer, Trinity Theological College



Lawrence Ko
Former National Director, Singapore Centre for Global Missions



Bernard Yeo
Gardening Chairperson, Siglap West CC



Leow Foon-Lee
Adjunct Principal Fellow, NUS Energy Studies Institute

A YEAR OF RENEWAL: OUR IMPACT

Equipping Churches for Creation Care Integration

Setting the Stage for Regional Impact

Engaging Believers to Care for Creation

Becoming a Charity

Developing the Next Generation

Sustainability Report

*Reflective Nature Walk at Fort Canning Park with pastors from the
Trinity Annual Conference of the Methodist Church in Singapore*

EQUIPPING CHURCHES FOR CREATION CARE INTEGRATION

RENEW is OFW's flagship programme for churches. Launched in September 2025, RENEW is a discipleship journey that provides a framework for churches in Singapore to integrate creation care into individual and church life, with the aim to *renew* their relationship with creation for right stewardship.



Number of participating churches:

16

of which 3 have reached the 1st milestone of being an Aware church (as of March 2026)

Read more about RENEW:



THE HEART BEHIND RENEW

Many of us in OFW have been there – carrying a burden for creation care, but unsure where to begin. We've sat in churches that didn't see the urgency, tried to start conversations that went nowhere, and wondered whether we were the only ones who cared. We've seen many burned out trying to go it alone.

We started RENEW because we didn't want others to feel that way.

Across Singapore's churches, there are many who genuinely feel the weight of our broken relationship with creation. What they lack is a clear path from conviction to practice, from a lone advocate to a whole congregation moving together.

RENEW was designed to bridge that gap. It is a structured, church-wide discipleship journey that takes congregations from awareness, through engagement, to lasting integration – so that creation care becomes part of their life and culture.

HOW RENEW SUPPORTS CHURCHES

To support participating churches, we create and provide the following resources:

RENEW Starter Kit is a collection of tools and templates to get started, including presentation slides and posters.

RENEW Gatherings let us walk more deeply with churches, providing opportunities for equipping, fellowship and co-creation across churches. Advocates, as participating individuals are called, gather thrice a year as a Community of Practice (COP) to be spiritually refreshed, encouraged, and equipped.

RENEW Playbooks are detailed ministry-specific guides to effecting change as well as relevant, real-life case studies.

- **Currently published:** Worship & Liturgy, Admin, Operations & Events, and a Case Study on Bethany Evangelical Free Church.
- **Upcoming:** Governance, Discipleship

RENEW Resources are a curated repository of materials to further support the church. This includes devotional materials, nature experience guides, and discounts with partner environmental companies.

RENEW Programmes are a range of initiatives for churches to participate in that deal with specific environmental concerns:

- **Net Zero Church** helps churches take concrete steps to measure their carbon footprint and minimise it in line with global standards through a six-step process, with the aim to achieve net zero emissions.
- The OFW **Church Garden Network** gathers gardening communities in churches to share knowledge and resources whilst growing together as disciples caring for creation.



“

Through a discipleship course that I attended in 2024, I learnt that God originally created humankind to have dominion over His creation. However, in today's world, we often focus on taking from creation to satisfy our needs rather than caring for it responsibly. RENEW has helped me see that creation care is a spiritual responsibility – an expression of our love for God and our obedience to Him.

It was an encouragement when our cluster leader organised a beach cleanup with OFW. This was more than just an activity – it became a meaningful opportunity for the church community to learn about creation care and to understand God's heart for His creation in a practical way. Seeing different generations participate together showed that there is growing awareness and willingness within the church to take action.”

— **KEN CHUNG, RENEW ADVOCATE, PAYA LEBAR METHODIST CHURCH**

HOW YOUR GIVING SUPPORTS RENEW

- Funding long-term relationship building needed for faithful advocacy
- Sustaining the development of future playbooks and resources
- Making RENEW Gatherings freely accessible to advocates of all backgrounds willing to step up and serve

To give towards RENEW, visit ofw.sg/support or scan this QR code:



CASE STUDY: WESLEY METHODIST CHURCH



BACKGROUND

Creation care at Wesley Methodist Church (WMC), headed by the Creation Care Committee, is rooted in the biblical conviction that environmental stewardship is a fundamental expression of Christian discipleship. As one of the first churches to register with us for RENEW, WMC seeks to intentionally transform the spiritual habits of its congregation, guiding them to recognise their shared responsibility as caretakers of God's earth.

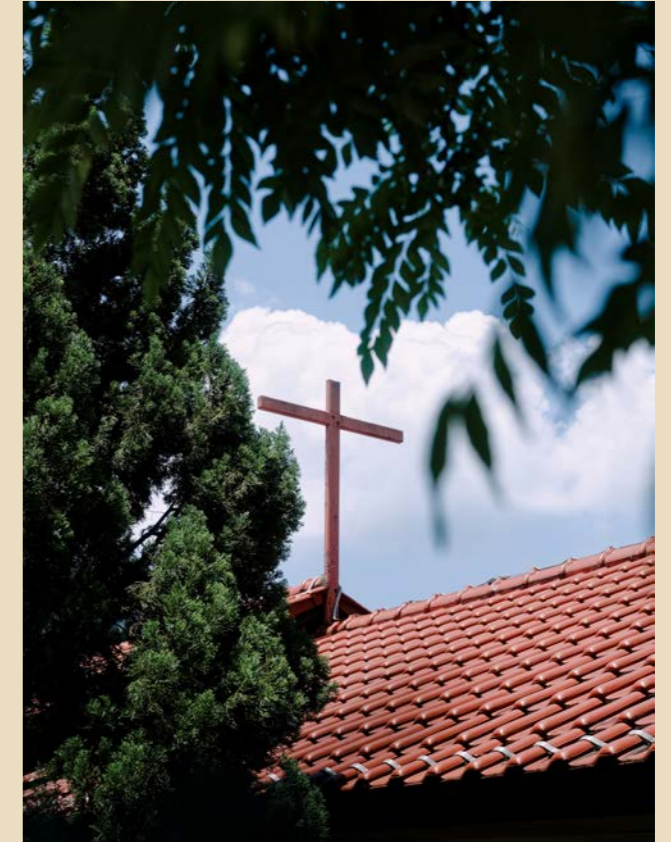
IMPACT

Our partnership with WMC included designing and supporting them to lead bimonthly reflective walks to Fort Canning Park. Designed as contemplative spaces, these walks allow participants to appreciate the beauty of God's creation and how it reveals facets of God to the world.

This stewardship flows into daily church life through several initiatives organised by WMC. Eco-reminders placed around the building prompt the community toward everyday sustainable habits, such as the use of reusable bottles. A comprehensive eco-planning guide for events further encourages this, providing practical tips to reduce waste and encouraging the adoption of sustainable alternatives. Meanwhile, a collaboration has brewed between ministries: leftover grounds from the coffee ministry are now repurposed into fertiliser for the church garden, blending green habits with meaningful fellowship. Their church bookstore also further advocates for green habits through recycling where old gift boxes are collected and are repurposed.



CASE STUDY: BETHANY EVANGELICAL FREE CHURCH



BACKGROUND

Known by many as "a Church in a Garden", Bethany Evangelical Free Church (BEFC) integrates creation care into the heart of its mission strategy. Grounded in biblical principles, the church recognises that environmental stewardship is already part of our God-given mission. This commitment shapes BEFC's approach to discipleship through a holistic approach to creation care. Through intentional preaching, ministry work and internal church policies, BEFC aims to invite the congregation to walk in simplicity and humility, eschewing greed and wealth, and to trust in the faithful provision of God.

IMPACT

BEFC seeks to meaningfully integrate creation care into all aspects of discipleship and church life. As our first partner church, they invited OFW to preach at their service in November 2024 and share at their Integral Missions Conference in October 2025. Under our Net Zero Church RENEW Programme, the church actively audits and offsets their emissions. We have also worked together on their sustainability efforts by assisting BEFC renting reusables from our corporate partner Muuse at a discount. They have also become advocates for creation care. In August 2025, we featured them in an article for thir.st and subsequently shared their testimony at CCC25 to encourage more churches to take this step.



BEFC's successful Community Gardening Ministry, launched in 2020, is open to the public and includes non-Christian members. Their experience of building a thriving gardening community has been invaluable to our budding Church Garden Network, of which the ministry is a member of. Other initiatives started by BEFC include a Community Creation Care Day (for which they bought our merchandise to use as door gifts sharing about creation care) and intergenerational nature walks that build relationships and create opportunities for sharing about the Creator.

SETTING THE STAGE FOR REGIONAL IMPACT

The **Creation Care Conference 2025** carried the theme, "On Earth As It is In Heaven", seeking to ignite a collective desire for God's restoration of creation. Held on 12 and 13 September 2025, the two-day event explored the integrality of creation care to discipleship and mission and connected like-minded believers to effect change together.

CCC25 gathered over 500 believers representing 130 churches from 10 countries, united in our mission to steward God's creation. Through a combination of worship, teaching and panel sessions, participants were challenged on their responsibility as stewards of God's creation. They were also equipped with practical knowledge and solutions to implement within their own lives and communities, supplemented with the launch of the RENEW programme for churches.

We also aspired to model how a sustainable event in a church should be for participants. To do so, we worked with Muuse to provide reusables for our plant-based conference meals, and purchased rescued fruits from UglyFood to divert food waste from supermarkets. Orange peels and coffee grounds were then collected for upcycling by The Sustainability Project.

We thank our venue partners, Faith Methodist Church and Queenstown Chinese Methodist Church, for their willingness to innovate with us.

Ultimately, CCC25 affirmed creation care as an integral aspect to the Christian mission. It served as a profound prayer and a call for Heaven's renewal to transform more of the earth and our hearts.



The conference was timely, as I had been struggling with deepening despair and resignation due to the never-ending bad news regarding our planet's health. I was reminded that creation care is fundamentally a call to obedience, and hence a surrender to God's leading. It is also in recognising the vast injustices of the climate crisis, and its disproportionate impact on vulnerable communities, that strengthens the church's desire to be salt and light in caring for creation."

— **TOH WEN SHIEN,**
CONFERENCE PARTICIPANT



SUPPORTING ORGANISATIONS

Through CCC25, we rallied 20 supporting organisations to publicly recognise God as Creator of all, and creation care as an integral aspect of God's mission as a Statement of Unity:

- The Methodist Church in Singapore
- The Presbyterian Church in Singapore
- Lutheran Church in Singapore
- The Evangelical Free Church of Singapore
- Singapore Bible College
- Biblical Graduate School of Theology
- The Bible Society of Singapore
- World Vision Singapore
- Singapore Centre for Global Missions
- Graduates' Christian Fellowship
- Interserve Singapore
- Micah Singapore
- BGR International
- OMF Singapore
- Caritas Singapore
- Fellowship of Evangelical Students Singapore
- Bethany Evangelical Free Church
- A Rocha Singapore
- Salt&Light
- thir.st

HOW YOUR GIVING SUPPORTS OUR CONFERENCES:

- Enabling access to creation care discipleship for all backgrounds through subsidised ticket fees and complimentary tickets for those in need
- Nurturing the next generation of creation care leaders with sponsorships for young students
- Offsetting material & operational costs
- Supporting the expenses of over a hundred volunteers & service providers

IMPACT SNAPSHOT

500
believers representing
130
churches from
10
countries

91.3%
expressed interest in
future creation care events

AFTER
94.5%
↑
participants
having a good
understanding
of creation
care after the
conference

BEFORE
33.9%

View the full Creation Care Conference 2025 Impact Report:



To support our next conference in 2028, visit ofw.sg/support or scan this QR code:



ENGAGING BELIEVERS TO CARE FOR CREATION



TALKS & ENGAGEMENTS

In 2025, we experimented with new and creative ways to awaken hearts and minds to creation care, meeting people where they are and inviting them into deeper reflection and action. Through tapping on the arts—film screenings, a photography masterclass, and immersive installations like the prayer wall and sculptures at CCC25—we created meaningful entry points for engagement.

6,664 participant-hours of meaningful creation care education

29 churches & organisations engaged of which 23 had partnered us for the first time



A WALK IN GOD'S GARDEN – REFLECTIVE NATURE WALKS

Working with volunteers from Wesley Methodist Church and Covenant Evangelical Free Church, we held and continue to hold regular walks to invite Christians of all walks of life to experience creation first-hand and contemplate on its Creator. Expanding beyond our existing adult-focused walks, we ran a pilot for children at Singapore Botanic Gardens that is now a regular on-demand programme.

23 total walks

250 total participants from 26 churches



CONTEMPLATIVE BEACH CLEANUPS

Through these sessions, participants are invited to reflect on what it means to reconcile with creation and renew God's earth. By putting right the relationships that we have with the rest of creation, we take part in Christ's redemptive work here on Earth. Above all, the cleanups continue to remind us of how creation care is the stewardship of God's creation. In the past year, we shifted our cleanup site to a significantly more polluted one, boosting the impact of every cleanup we run for churches.

206kg of rubbish collected over 3 cleanups



“I once led a walk with youths. A few of them shared that they had not visited the Singapore Botanic Gardens since they were much younger. This reminded me of how important it is to create opportunities for people to reconnect with the natural world, even in a city like Singapore where we are blessed with accessible green spaces. Creation care begins with knowing and loving what God has made. When children and families spend time outdoors and develop a deeper connection with the natural world, they are more likely to value it and steward it well. My hope is that these nature-based experiences help participants not only grow in their appreciation of creation, but also in their awareness of the Creator behind it all.”

— PAMELA PANG-KOH, NATURE WALK VOLUNTEER GUIDE

DEVELOPING THE NEXT GENERATION

To prepare young people for full-time ministry in creation care, we started offering paid internships this year. Interns are given opportunities to experience the workings of a small charity and parachurch organisation, and are involved in every facet of our work.

Where possible, interns' stipends are partially supported by their churches during the course of their internship, which in turn gives churches a vested interest in what they, and we, do at OFW.

HEAR THEIR STORIES:

VERON YEO
INTERN FROM 3:16 CHURCH



“One of my key learnings was that creation care is not merely an environmental issue but a biblical calling. Through studying Scripture and preparing creation care resources, I discovered many explicit references to God's concern for creation and humanity's responsibility towards it. From Genesis, where God appoints humans as stewards of the earth, to passages that call for justice, care, and restoration, I learnt that caring for creation is an integral part of Christian discipleship and an act of worship and stewardship. I was challenged to reflect on my own lifestyle choices and how they impact God's creation, while encouraging me to play a more active role in caring for the environment as part of my faith journey.

I also gained insight into the nature of ministry work. Observing the dedication of OFW staff and volunteers taught me that ministry often requires patience, perseverance, and faithfulness in small tasks that may not yield immediate results. I learnt to trust in God's plans and timing, recognising that meaningful change often happens gradually through consistent effort and faithful service.”

BECOMING A CHARITY

One of the year's most significant milestones was registering as a non-profit organisation, and subsequently, attaining charity status from the Commissioner of Charities (COC) in January 2026.

As a registered charity, this means that we can now publicly raise funds, claim tax exemptions, allow for greater accountability, and inspire public confidence in the work that we are doing. This significant milestone represents our commitment to operating with integrity and transparency as we grow strategically to achieve our long-term vision.

SHENN TAN
INTERN FROM ST. JOHN'S-ST. MARGARET'S CHURCH



“When we sit down to pray, I am always reminded that I am not just in a job but in full-time Christian ministry. The efforts to continually focus on God and commit things to Him are not surprising, but it was good to have had the opportunity to live that out.

The most eye-opening experience during my time here was seeing creation care lived out at a church level through sustainability consulting – how the environmental expertise of the world is used by churches in their discipleship. I had never really thought about how the church, as an organisation, could care for creation. As I supported one of the consulting projects, I got to see the audits and effort put in to improve processes and offset emissions. Through their intentionality, I saw the concern for the ethos of creation care rather than blindly following worldly standards of sustainability.”

HOW YOUR GIVING SUPPORTS OUR EDUCATIONAL EFFORTS

- Providing fair remuneration for staff who spearhead our educational efforts
- Enabling internships that develop the next generation of creation care advocates
- Funding logistics and digital tools to organise successful engagement events

To support our work, visit ofw.sg/support or scan this QR code:



SUSTAINABILITY REPORT

In line with the revised Code of Governance for Charities and IPCs whereby charities are “encouraged to conduct their activities with ESG factors in mind and communicate their ESG activities to their stakeholder”, our environmentally-conscious efforts are also a reflection of our commitment to good governance and accountability as a charity.

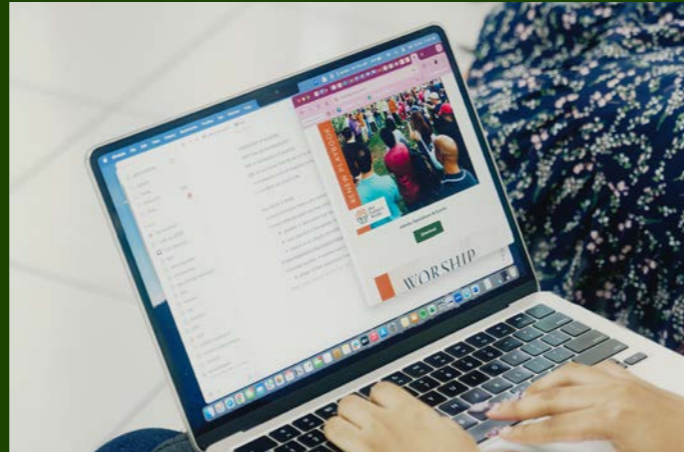
At OFW, we believe that our deeds must match our words so that we can be a trustworthy testimony to what faithful stewardship of creation can look like. Our programmes and processes are also aligned with the United Nations Sustainable Development Goals (UN SDGs) to reflect how the Church can contribute globally toward mutual flourishing of people and planet.



RESPONSIBLE CONSUMPTION AND PRODUCTION

We prioritise waste reduction by minimising consumption, encouraging the reuse of materials and products, and maximising resource efficiency. Additionally, we collaborate with other organisations to recycle or upcycle residual waste from our events. This is not just for our events but also our processes. For example, discarded rice sacks from supermarkets are used for our beach cleanups, and our fundraising merchandise are made from recycled materials and designed for longevity.

152 kg
waste diverted from the landfill



CLIMATE ACTION

We are still kickstarting our journey to develop our GHG emissions inventory and working towards developing a more comprehensive approach to tracking and managing our emissions. To reduce our emissions, our staff team works on a hybrid work arrangement to reduce commute and utilities usage. We do not have a company vehicle and take public transport to on-site meetings as much as possible. All our events are meatless.

Overall GHG Emissions*:
737 kgCO₂e



**OFW has not identified any Scope 1 emission sources, as our operations do not generate direct GHG emissions. Scope 2 emissions from purchased electricity are not included in this figure because electricity consumption data for our office space are unavailable, as electricity costs are borne by our partner, World Outreach Singapore. Due to data availability, we have reported only Scope 3 emissions from employee commuting, Google Workspace, and fundraising merchandise.*



LIFE ON LAND AND BELOW WATER

Aligning with our desire to inspire disciples to love and care for creation, we believe that providing Christians with the opportunity to respond to God’s calling can cultivate their own. We organise monthly nature walks and regular beach cleanups with our partner churches, engaging Christians of all walks of life and highlighting the importance of tending to creation.

206 kg
marine litter
cleared



23
walks
organised



3
cleanups
organised



PARTNERSHIPS FOR THE GOALS

The heart of our work involves galvanising churches to partner with wider society to address environmental issues and work towards a sustainable future for the flourishing of both people and planet as one creation.



WHAT'S NEXT

Reflective Nature Walk at Singapore Botanic Gardens

OUR 2030 GOALS

By 2030, we want to foster a self-sustaining ecosystem enabling the Church in Singapore to care for creation, driven by:



300 ADVOCATES
leading creation care
movements



30 CHURCHES
embedding creation care in
disciple-making



**3 COMMUNITIES
OF PRACTICE**
actively catalysing creation care

These goals will allow Singapore to be a strong base for our long-term goal: partnering with regional champions to disciple the 148 million Christians across Southeast Asia.

To that end, OFW's focus in the coming year will be turning theory into action through building deeper communities and empowering advocates with more tools.

DEVELOPING COMMUNITIES OF PRACTICE

We are still at the beginning stages of building our existing COPs with RENEW advocates and church gardening groups formed end-2025. In upcoming gatherings, we will continue to build community, momentum, and catalyse creation care in their respective realms of knowledge.

A third COP bringing together **Sustainability Professionals** will also meet before the end of 2026. This COP will ask, "How can Christians in the sustainability industry bridge missional faith with their vocation?" with the goal to cultivate a community for the exchange of ideas, and leverage on these professionals' technical skills and networks to catalyse systemic, faith-informed change in churches and wider society.

TURNING THEORY INTO ACTION

OFW's inaugural **Creation Care Forum** will be held on 12 September 2026 to explore creation care as part of holistic discipleship. Unlike previous awareness-focused conferences, the aim is to help participants take concrete steps toward integrating creation care into their ministries through a mix of teaching, topical workshops, and hands-on activities.

EMPOWERING ADVOCATES

This year, we are publishing and launching a few resources:

1. A **Children's Teaching Toolkit** with lesson plans, digital materials and a craft kit for children's ministry teachers, staff and parents to teach creation care.
2. A **FAQ Repository** of answers, vetted by experts, empowering advocates to answer questions on creation care.
3. **On Earth as in Heaven: Proceedings from CCC25**, an e-book that brings together key insights from Creation Care Conference 2025 with fresh theological reflections on why we care for creation.

HOW YOUR GIVING SUPPORTS OUR FUTURE IMPACT

- Covering the cost of research, design and production to develop new resources
- Making the Creation Care Forum accessible to advocates of all backgrounds
- Enabling the slow, intentional yet difficult work of community building that bears fruit in the long term

To support our work,
visit ofw.sg/support or
scan this QR code:



SUPPORT US

As a Christian charity, our ability to survive as a kingdom ministry depends critically upon the generosity of our donors and supporters. 100% of what we receive is channelled into ministry. We are committed to operating at the highest standards of integrity and transparency.

By sowing into our ministry, you become a crucial part of our journey as we work towards serving Southeast Asia in the decades to come. Every contribution, large or small, makes a difference.

DONATIONS ALLOW US TO:

- Disciple generations to love Creator and creation in word and deed
- Equip the church to lead in action to create a flourishing world
- Empower changemakers in the region for integral mission

WAYS TO SUPPORT US:

- Make a one-time contribution
- Become a monthly supporter
- Fundraise for us in your birthday month
- Pray for and with us
- Volunteer with us

To support us or make a donation, scan this QR code:



THANK YOU TO OUR PARTNERS

Our heartfelt thanks go out to all our donors and partners for your generous support. Every achievement in this report is a reflection of your belief that the Church must live out God's heart for creation. Your partnership fuels our work to inspire, equip and empower the body of Christ to love and care for God's creation.

We are deeply grateful to each and every one of you for your faithful and invaluable support and trust.

PARTNER ORGANISATIONS

The following organisations have formally partnered with OFW to multiply our ministry:

- A Rocha Singapore
- Bethany Evangelical Free Church
- Fellowship of Evangelical Students
- Muuse
- SunPro Energies
- The Sustainability Project
- World Outreach Singapore



SUPPORTING ORGANISATIONS

OFW is thankful for the following organisations whose financial support has been invaluable:

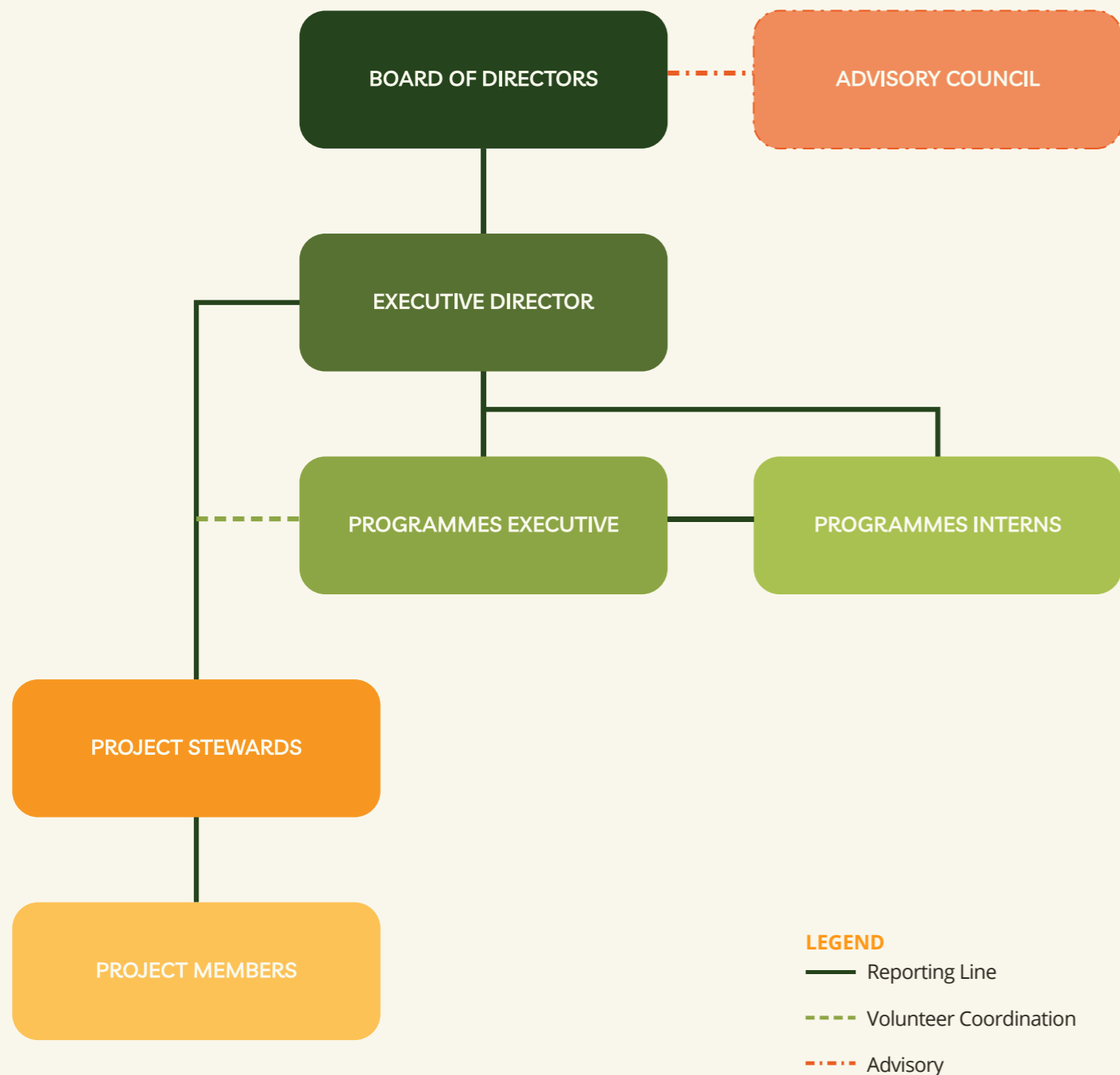
- Bethany Evangelical Free Church
- Caritas Singapore
- Covenant Evangelical Free Church
- Evangelical Free Church in Singapore
- Faith Methodist Church
- Lutheran Church in Singapore
- Paya Lebar Methodist Church
- Presbyterian Church in Singapore
- Queenstown Chinese Methodist Church
- St John's-St Margaret's Church
- The Silent Foundation
- Thirst Collective
- Trinity Annual Conference
- Wesley Methodist Church



APPENDIX

- Organisational Chart
- Our Board Governance
- Our Charity Policy
- Financial Overview

ORGANISATIONAL CHART



OUR BOARD GOVERNANCE

ROLE OF THE GOVERNING BOARD

The Board's role is to provide strategic direction and oversight of OFW's programmes and objectives to steer OFW towards fulfilling its vision through excellent governance and stewardship.

As part of its role, it oversees the following matters:

- Yearly budget;
- Organisational strategy, reviewed on a yearly basis;
- Finance policies and controls, including reviewing and approving quarterly financial statements;
- Risk management;
- Human resources, including hiring and dismissal of staff members;
- New programmes/services, and monitor existing programmes/ services;
- Fund-raising initiatives;
- Whistle-blowing and conflict of interest matters.

The Board undertakes a yearly review of its effectiveness through a year-end Board retreat.

TERM LIMIT OF BOARD

The term of office of the Board is two years. All office-bearers may be re-elected to the same or related post for consecutive terms of office except for the Honorary Treasurer.

The Treasurer may only be re-elected to the post for a maximum of one consecutive term of office (resulting in a total of four consecutive years). Re-appointment of the outgoing Treasurer may be considered after a lapse of at least two years.

To enable succession planning and steady renewal, the Board has a term limit of ten years. Presently, no Board member has served for more than ten years.

BOARD MEETINGS AND ATTENDANCE

During FY2025/2026 (11 Dec 2024 – 31 Mar 2026), a total of (a) seven Board Meetings and (b) one Extraordinary General Meeting was held.

The following table sets out each Board member's attendance at the meetings:

NAME	ROLE	MEETING ATTENDANCE
Rev Dr Leow Wen Pin	Chairperson	7/8
Mr Lester Tan	Treasurer	7/8
Ms Liaw Ann Shin	Secretary	7/8
Ms Isabel Loh	Member	8/8
Ms Alicia Lim	Member	8/8
Mr Jarel Tang	Member	3/5*
Mr Dennis Tan	Executive Director	8/8

*Mr Tang only joined OFW's Board on 15 July 2025. All other directors were appointed 11 December 2024.

OUR CHARITY POLICY

DISCLOSURE OF REMUNERATION AND BENEFITS RECEIVED BY BOARD MEMBERS

No Board members were remunerated for their Board services in the financial year.

BOARD GOVERNANCE AND EFFECTIVENESS

OFW upholds high standards of governance through careful processes for Board selection, appointment, training, evaluation, and renewal. Board members are chosen based on their skills, experience, and alignment with OFW's mission and values. Candidates are typically nominated by existing Board members who are informed about their suitability and character. All nominations are reviewed at a Board meeting before being appointed.

The Board's performance is assessed regularly through self-evaluation and peer feedback. Re-nomination and reappointment decisions consider each Director's contributions, participation, and the evolving needs of OFW.

REMUNERATION OF KEY STAFF

Key staff salaries are reviewed annually by the Board, benchmarked against publicly-available salary guidelines published by the National Council of Social Service. Salaries reflect each role's scope and responsibilities and are not set by the staff themselves. Salaries are approved by the Board with the recusal of the Executive Director. Presently, all salaries remain below \$100,000 annually. OFW has no paid staff who are close members of the family of Board members, who each receives total remuneration of more than \$50,000 during the year.

VOLUNTEER MANAGEMENT PROCESSES

OFW recruits volunteers regularly to support with planning and executing its programmes. They are recruited based on their skills and interests. Volunteers undergo onboarding covering the charity's mission, vision, and values. They are briefed on their responsibilities, OFW's Volunteer Code of Conduct, and provided with relevant training, materials, and transport cost reimbursements where necessary. An annual Volunteer Appreciation Day is held to recognise their contributions and gather feedback for improvement.

CONFLICT OF INTEREST POLICY

All Board members and staff are required to comply with the OFW's conflict of interest policy. The Board has put in place documented procedures for Board members and staff to declare actual or potential conflicts of interests on a regular and need-to basis. Board members also abstain and do not participate in decision-making on matters where they have a conflict of interest.

WHISTLE-BLOWING POLICY

OFW has a whistle-blowing policy in place to address concerns about possible wrongdoing or improprieties in financial or other matters in OFW. Our full whistle-blowing policy may be found on our website.

RESERVES POLICY

The primary objective of OFW's reserves policy is to safeguard its assets and ensure long-term financial sustainability. Reserves are managed prudently to support OFW's core programmes and operations while providing a financial buffer against unexpected shortfalls or disruptions. This enables OFW to maintain continuity of services and respond to future ministry needs, particularly in furthering creation care church initiatives. OFW's reserves also allow flexibility to invest in capacity building and new opportunities as they arise.

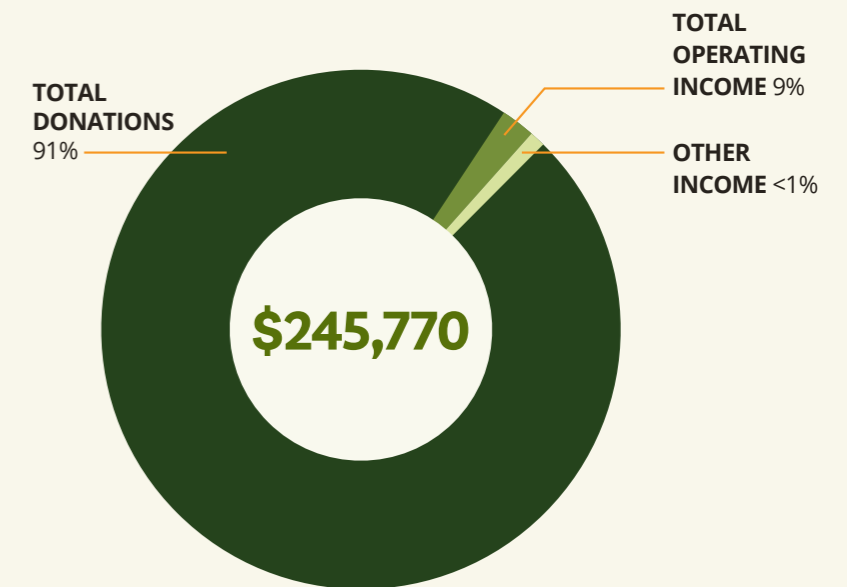
OFW has put in place a policy to maintain a reserves ratio target of at least six months of its annual operating expenditure and did meet this target as at the end of this reporting year.

	FYE Mar 2026
General Funds (Reserves)	\$147,373.64
Designated / Restricted Funds	\$0
Annual Operating Expenditure	\$100,130
Ratio of Reserves	1.4:1

FINANCIAL OVERVIEW

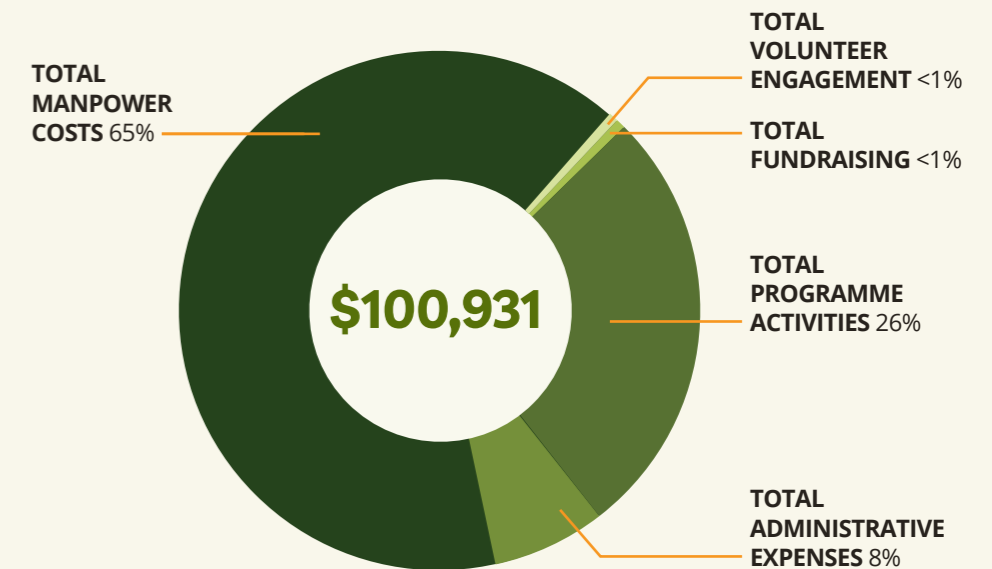
INCOME

As our first FY as a charity, the total income for FY2025/2026 spans 15 months and thus includes income from two annual fundraising campaigns. All donations received were in cash from solicited and unsolicited sources to support operations. No donations in kind, sponsorships, or government grants were received. Operating income, comprising programme fees and book sales, provided an additional source of revenue to support OFW's activities.



EXPENSE

OFW remains committed to responsible financial management while building capacity to serve churches more effectively. Our main area of expenditure is manpower, although we operate on a lean team of just two staff members, supported by occasional interns and a pool of dedicated volunteers. The other major area of expense is programmes, especially through the organisation of impactful events such as the Creation Care Conference 2025. Our overall expenditure was within our expected budget.





Our Father's World Limited

(UEN 202452391R)

2 Kallang Ave, #04-09 CT Hub @ Kallang, Singapore 339407

www.ofw.sg

@our.fathers.world

On the covers of our Annual Report are Albizia trees—known also as matchstick trees—that are a familiar sight in Singapore's secondary forests. They are a pioneer species, fast-growing and providing shade to other flora and fauna that follow; qualities that also reflect our journey thus far.

